

# HILMERSON SAFETY RAIL SYSTEM™

## Frequently Asked Questions

### Executive Summary:

Using job-built wooden 2x4 guardrails for leading edge protection is an obsolete and wasteful practice. In 2017, Hilmerson Safety worked closely with some of the largest general contractors in the country to develop an American made, construction grade, and purpose-built engineered guardrail system for the construction industry. By combining best practices from safety, logistics, equipment management, and sustainable building, the Hilmerson Safety Rail System delivers efficiency, engineered fall protection, and significant ROI for GC's equipment operations.

### What is the Hilmerson Safety Rail System™?

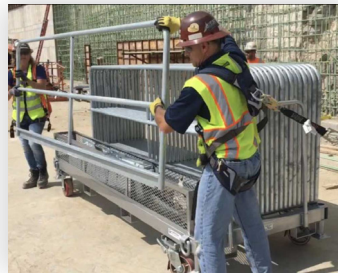
The HSRS is a patent-pending engineered guardrail system designed by the construction safety professionals at Hilmerson Safety Services, Inc. We have designed a robust and re-usable galvanized steel guardrail system and a mobile delivery cart that allows you to install complete OSHA compliant fall protection in minutes instead of hours.

### How is the Hilmerson Safety Rail System™ installed?

The HSRS installation is a rapid 4-step process. 200 linear feet of OSHA compliant guardrail can be installed in concrete substrates in less than one hour with a single anchor bolt, or on a wide variety of other surfaces using our non-penetrating weighted bases.



**Step 1:** Install the baseplate.



**Step 2:** Get a rail from mobile storage cart.



**Step 3:** Set guardrail section on baseplate.



**Step 4:** Pin guardrail and repeat.



✉ [info@hilmersonsafety.com](mailto:info@hilmersonsafety.com)  
🌐 [www.hilmersonsafety.com](http://www.hilmersonsafety.com)  
☎ (952) 224-9390



Revolutionary Construction-Grade™ Safety Products That Improve Job Site Safety AND Your Bottom Line

# HILMERSON SAFETY RAIL SYSTEM™

## Frequently Asked Questions

### What if I can't drill into concrete?

If you can't (or don't want to) drill into the concrete, the HSRS can also be anchored in place using an approved threaded embed which can be laid out and installed before the concrete is poured. The HSRS can also be installed with our compatible weighted bases which require no anchor bolts, and attach to the same guardrails as the anchored baseplate.



### Is there a weighted base option?

The HSRS installation is a rapid 4-step process. 200 linear feet of OSHA compliant guardrail can be installed in concrete substrates in less than one hour with a single anchor bolt, or on a wide variety of other surfaces using our non-penetrating weighted bases.



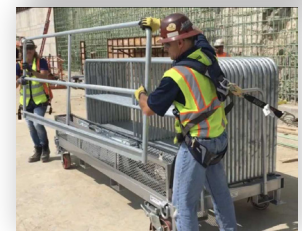
### How does a mobile storage cart add value?

The HSRS is shipped, stored, and deployed on a galvanized steel cart that is fork accessible, equipped with crane pick points, and stackable. When your system arrives at the job site simply off load with a forklift or crane directly from the truck to the level needing guardrail protection.



### How does the mobile storage cart help during the guardrail installation process?

The mobile storage cart allows for rapid distribution, clean and orderly installation and tear down, and a safe ergonomic way to move guardrails throughout the jobsite. The guardrail system is totally self-contained on the cart allowing workers to move quickly and efficiently.



### How does the mobile storage cart help with inventory, visual inspections, and storage?

Each 10ft x 4ft mobile storage cart is capable of storing twenty 10ft guardrail sections. That is 200lf of engineered guardrail that is quickly visually inspected, easily counted, and conveniently stored. The cart houses all of the baseplates, anchors, and pins required to install the guardrails. When stacked, 400lf of guardrail can be stored on 40 sq ft of ground.



✉ [info@hilmersonsafety.com](mailto:info@hilmersonsafety.com)  
🌐 [www.hilmersonsafety.com](http://www.hilmersonsafety.com)  
☎ (952) 224-9390



Revolutionary Construction-Grade™ Safety Products That Improve Job Site Safety AND Your Bottom Line

# HILMERSON SAFETY RAIL SYSTEM™

## Frequently Asked Questions

### How do the guardrail sections attach to the baseplates?

Guardrail sections are easily secured to the baseplates with gravity locking pins (common scaffolding pigtails) for ease and visual confirmation of engagement.

### What types of construction is the HSRS designed for?

The Hilmerson Safety Rail System™ is the ideal solution for passive leading-edge fall protection in stadium construction, high-rise construction, bridge construction, excavations, floor openings, and elevator shafts commonly found on construction sites. It's also an excellent solution for pedestrian control.

### Why does the construction industry need a re-usable engineered guardrail system?

Wooden 2x4 guardrails take significant time and labor to build and install and offer questionable fall protection. When the job is over the 2x4s are thrown in a dumpster. A re-usable and engineered system that installs in minutes will drive down costs and waste.

### Is this an OSHA compliant product?

Yes, the Hilmerson Safety Rail System™ meets both 1910.29 and 1926.502 applicable OSHA standards, and is capable of withstanding a force of at least 200 pounds (890N) applied within 2" of the top edge, in any outward or downward direction..

### Is this an engineered system?

Yes, the Hilmerson Safety Rail System™ was developed utilizing an independent third party registered professional engineer to provide calculations and design requirements which include a robust top rail, mid rail, and integrated toe board to meet and exceed OSHA requirements for leading edge protection.

### Can debris netting be used with the Hilmerson Safety Rail System™?

Yes, it can be installed quickly and economically using hurricane clips or standard zip ties to secure netting to the system.



✉ [info@hilmersonsafety.com](mailto:info@hilmersonsafety.com)  
🌐 [www.hilmersonsafety.com](http://www.hilmersonsafety.com)  
☎ (952) 224-9390



# HILMERSON SAFETY RAIL SYSTEM™

## Frequently Asked Questions

### What lengths do the guardrails come in?

We offer 10ft panels, 5ft panels, and adjustable length panels that span 5.5ft-9ft in length. For added versatility, we also offer spanner bars and knuckle and tube to provide a wide range of installation and layout configurations.

### Can the Hilmerson Safety Rail System™ be used on substrates other than concrete?

As a weighted base system, it can be deployed on many surfaces. As an anchored system, Hilmerson Safety Rail System™ is only approved for use on concrete at this time. Please refer to product specs and installation instruction documents for further detail.

### Is it difficult to fly materials to elevation with this guardrail system in place?

No, the Hilmerson Safety Rail System™ was designed with this task in mind. Simply remove two pigtail pins from a single section of guardrail and swing it open, creating a safe and easy opening to deliver tools and materials. Upon completion simply put the guardrail section back on the base plate and re-insert the pigtail pins.

### Can this system be used as an anchor point for fall restraint or arrest?

No, Hilmerson Safety Rail System™ is not engineered to serve as an anchor point for active fall protection systems.

### Is this guardrail system available for rent?

Yes! Call us to inquire about your next project.



✉ [info@hilmersonsafety.com](mailto:info@hilmersonsafety.com)  
🌐 [www.hilmersonsafety.com](http://www.hilmersonsafety.com)  
☎ (952) 224-9390



# HILMERSON SAFETY RAIL SYSTEM™

## Frequently Asked Questions

### Why Hilmerson Safety?

Debra Hilmerson founded Hilmerson Safety in 2001 after a decade of leading safety programs for some of the largest companies in the country. Deb is a fall protection subject-matter expert and has been a strong advocate for better fall protection solutions for decades. Hilmerson Safety is not just a safety product distributor. Deb's team of safety professionals has over 80 years of combined industry experience and provide practical safety solutions for common industry problems to help drive industry-wide safety performance.



*"Protecting workers has been my life's work. Since 2001, Hilmerson Safety Services, Inc. has provided safety solutions to clients in construction, manufacturing, health care, oil/gas, wind, solar, and many other industries. We are working really hard to provide industry leading expertise and cost-effective solutions that make sense for the industry and our clients."*

*-Debra Hilmerson, President/CEO*



✉ [info@hilmersonsafety.com](mailto:info@hilmersonsafety.com)  
🌐 [www.hilmersonsafety.com](http://www.hilmersonsafety.com)  
☎ (952) 224-9390



**Revolutionary Construction-Grade™ Safety Products That Improve Job Site Safety AND Your Bottom Line**